

High Definition Freestanding Digital Poster

Universal User's Manual

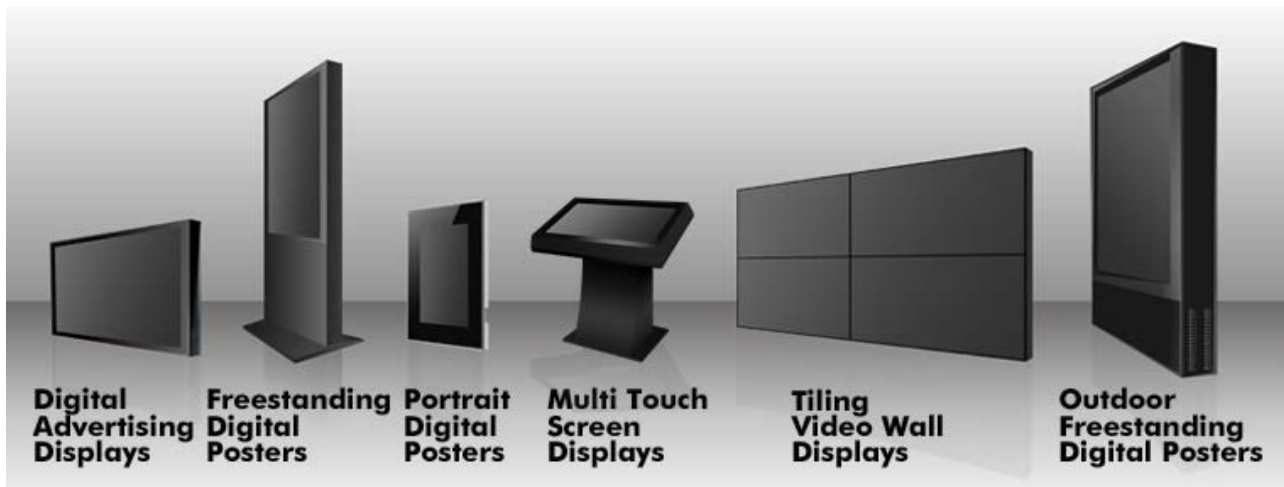


L Series

Version LHD1.0



Our Full Product Range



Safety Instructions



- Please keep the display away from any heat sources. Place the display in a stable and well-ventilated place.
- Please handle with care as product contains glass.
- The holes or openings on the display are designed for ventilation. Do not cover or block the ventilation holes or openings with any objects.
- Remove protective covering from the screen before you use the display.
- Shut off the power supply before cleaning. Use a soft lint-free cloth instead of a tissue to wipe the screen.
- You may use a glass cleaner to clean the product as required. However, never spray the cleaner directly onto the display surface.
- Do not attempt to repair this product yourself! Improperly disassembly of the product may invalidate the warranty and lead to possible danger
- If you have a problem that cannot be solved using the "Troubleshooting" guidelines, please contact your supplier.

Quick Start Guide

This section of the guide is to allow rapid set up and use of the unit. Please refer to the main part of the User Guide for full information on use of the unit.

Please use the following steps:

1. Unpack unit and place in desired location
2. Plug power cable to mains outlet and the unit will power ON automatically. You will be greeted by the start-up screen.
3. Collect the files you wish to display and make sure they are supported by the unit (see Section 2.2)
4. On a PC load the files you want to play and store onto an empty USB drive in the root directory (without putting them into a folder). Remove USB from PC.
5. Insert USB drive into the slot marked "USB (Mainboard)" on the back of the unit.
This will delete any files currently stored on the unit and copy the new files to the unit's internal memory; once completely loaded it will ask you to remove USB drive.
6. Remove the USB drive and the unit will play the stored files in a loop.



Contents:

1.	Introduction	5
1.1	Box Contents	5
1.2	Product Overview	5
1.3	Remote Control	6
1.4	Replacing the Remote Control Battery	7
1.5	Menu Operation	8
2.	System Operation	14
2.1	System Functions	14
2.2	Supported Media Files	15
2.3	Steps to Load Media Files	16
2.4	Inputs	16
3.	Advanced Guide	17
3.1	Main Menu	17
3.2	Creating Playlists	17
3.2.1	Add Schedule	18
3.2.2	Add Selected Items	18
3.2.3	Saving	20
3.3	Editing Playlists	21
3.3.1	Deleting Items	21
4.	F.A.Qs and Troubleshooting Guide	22
4.1	How do I play PowerPoint presentations on my display?	22
4.1.1	Option 1 (for plain slides with no animation):	22
4.1.2	Options 2 (for presentations with animation):	22
4.2	Wireless connection	23
4.3	Video Conversion	23
4.3.1	Format Factory	24
4.3.2	HD Video Converter Deluxe	27
4.4	Connecting screen to PC	28
4.5	My Remote Control does not appear to be working	28
4.6	My media file does not fit properly on the screen	29
4.7	My media file will not display	29
4.8	My media files will not update	30
4.9	My media will not loop	30
5.	Full Range Specifications	31

1. Introduction

Congratulations on your purchase of our product. Please read carefully and follow all instructions in the manual before first use.

The product should not be exposed to dripping or splashing and no objects filled with liquids, such as vases, should be placed on the product.

For user convenience, a number of operations can be performed through the remote control.

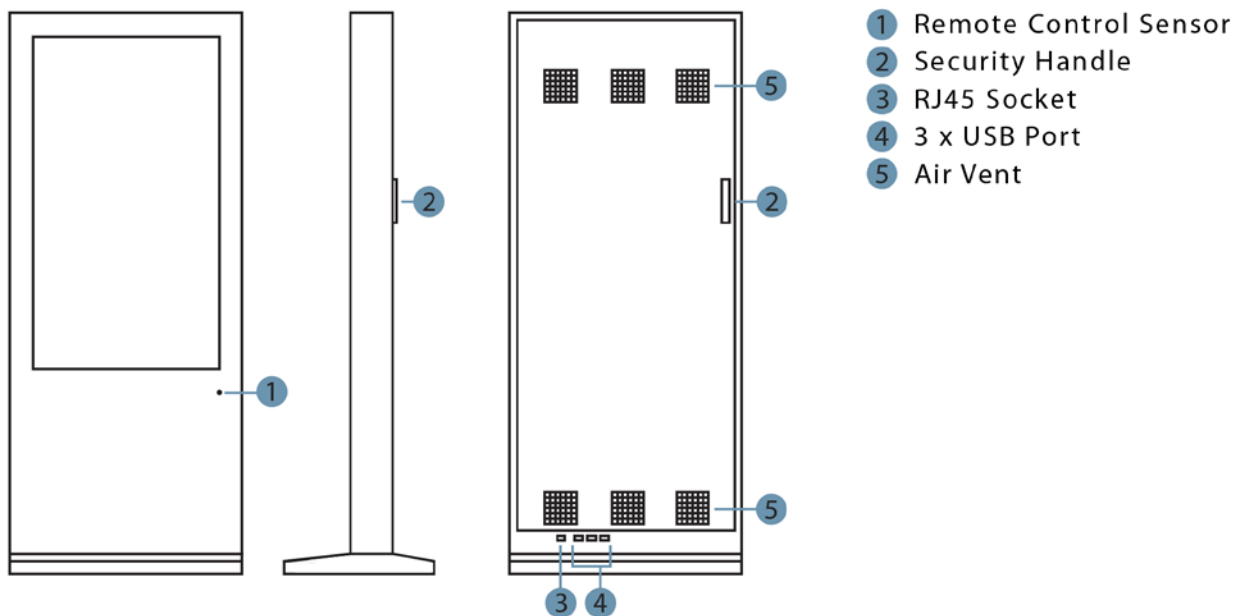
Attention:

1. Do not change any default setting when it is unnecessary.
2. Keep the product far away from water during installation and use.

1.1 Box Contents

- 1xFreestanding Digital Poster
- 1xPower Cable
- 1xCD (User Manual and Software)
- 1xRemote Control
- 1xKey

1.2 Product Overview



1.3 Remote Control

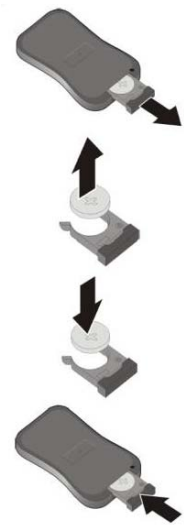


Remote instruction

Button	Description
POWER	Power on or off
⏮	previous program
⏭	Next program
+ (volume)	Raise volume
- (volume)	Lower volume
PLAY/PAUSE	Play/Pause, Confirm selection
↑	Up, navigation button
→	Left, navigation button
↓	Down, navigation button
←	Right, navigation button
STOP	Stop the selected file
SETUP	Menu setting

1.4 Replacing the Remote Control Battery

1. Open the battery cover
2. Take out the battery box in the right direction as shown in the picture below
3. Remove the used battery
4. Insert the new battery with its terminals corresponding to the indicator
5. Put the cover back in



1.5 Menu Operation

Main Menu includes following sub-menus: Input Source, System, Display, Clock Setup, ON/OFF Time Setup and Volume Setup.

Press "SETUP" to enter Main Menu, press $\uparrow\downarrow$ to select the right item, press "PLAY" to confirm selection. Choose EXIT to exit the Main Menu.

Main Menu
Input Source
System
Display
Clock Setup
ON/OFF Time Setup
Volume Setup
EXIT

Input Source:

The default input is card reading system, press $\uparrow\downarrow$ to select the right input, press "PLAY" to confirm selection.

Input Source
Storage
YPbPr
HDMI
AV
VGA
Return Main Menu

System:

System	
Language:	ENGLISH
Show time:	OFF
Clock mode:	--: --
Encrypt:	
Auto play system:	
Seamless play:	OFF
Photo time:	10 Seconds
Restore default:	
Return	

- > Language: 简体中文, ENGLISH
- > Clock: Turn the display clock ON/OFF, the default mode is OFF
- > Clock Mode: --:--:--:--:--
- > Auto Play System: Play Media, Function Mode, Time Mode

Play Media: Play programs stored in CF card automatically

Auto play system			
Auto Play Configuration			Play Media
	Play	Port	Time Set
	1	Storage	0: 00
	Start Time	Port	End Time
OFF	0: 00	Storage	0: 0
OFF	0: 00	Storage	0: 0
OFF	0: 00	Storage	0: 0
OFF	0: 00	Storage	0: 0
Return			

Function Mode: programs can be played repeatedly according to pre-setup time. Press ←→ button to select item and press ↑↓ to set up parameter.

Auto play system			
Auto Play Configuration			Function Mode
	Play	Port	Time Set
	1	Storage	0: 00
	Start Time	Port	End Time
OFF	0: 00	Storage	0: 0
OFF	0: 00	Storage	0: 0
OFF	0: 00	Storage	0: 0
OFF	0: 00	Storage	0: 0
Return			

Time Mode: It will play according to programmed schedule. There are 4 time periods to set up.

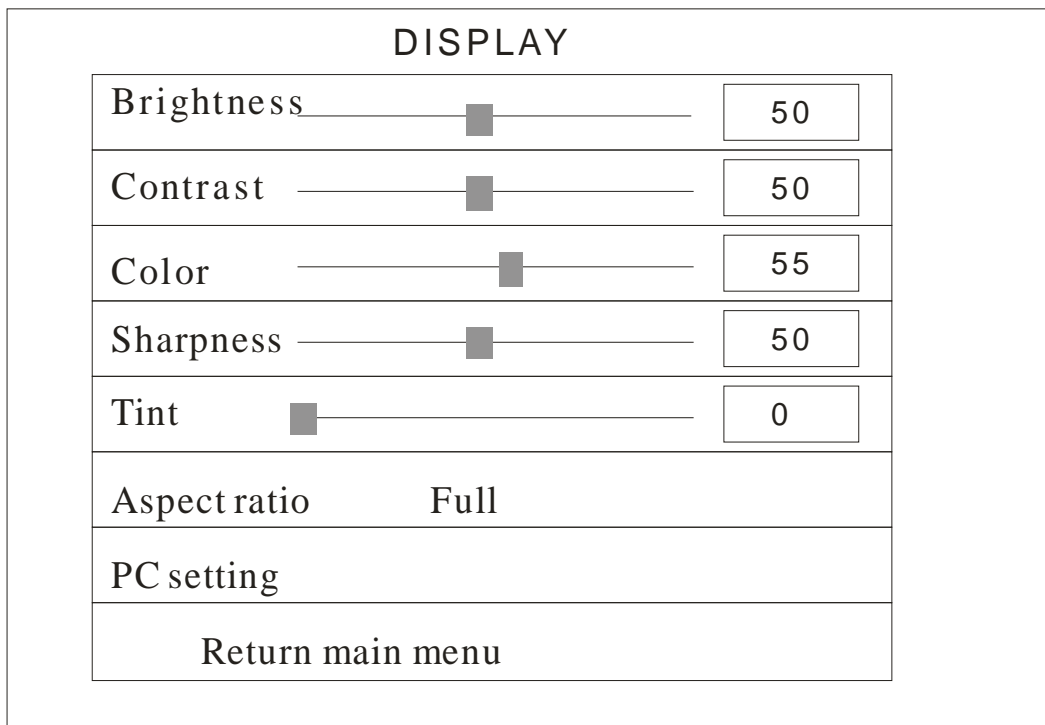
> Seamless Play: The video file will play seamlessly if this function is turned ON. Factory default mode is OFF

Note: If this function is turned ON, the file format should be the same (including AV resolution, frame rate and other specification), otherwise there will be intervals between each file.

- > Photo Time: Set image display time from 5 seconds to 60 seconds.
- > Restore Default: Restore all parameters to factory mode

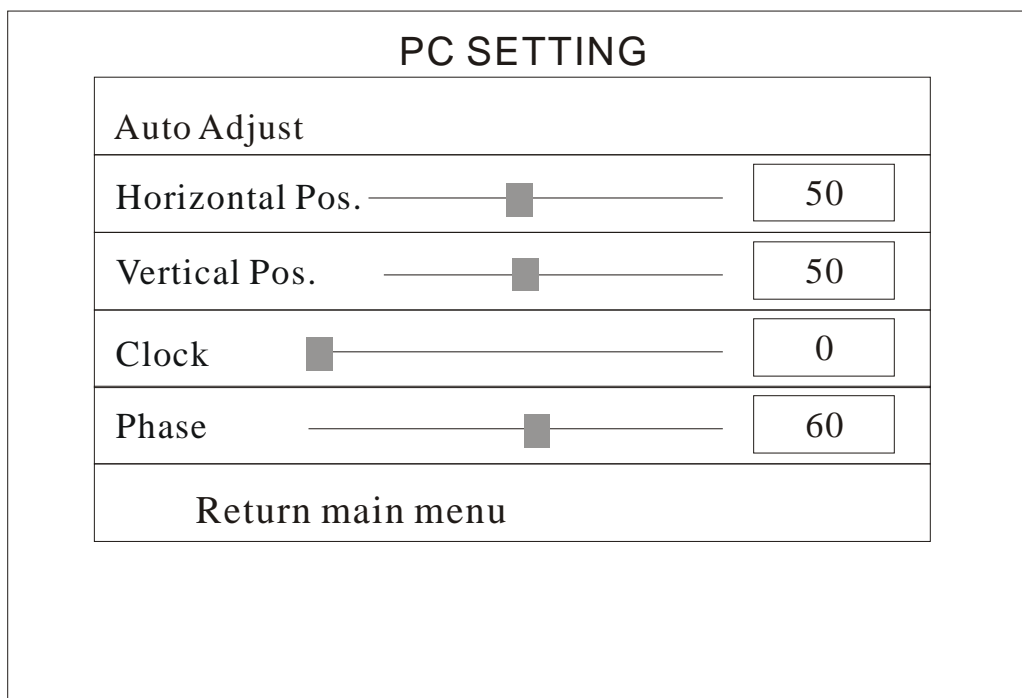
Display:

> Set screen Brightness, Contrast, Color (Saturation), Sharpness, Tint



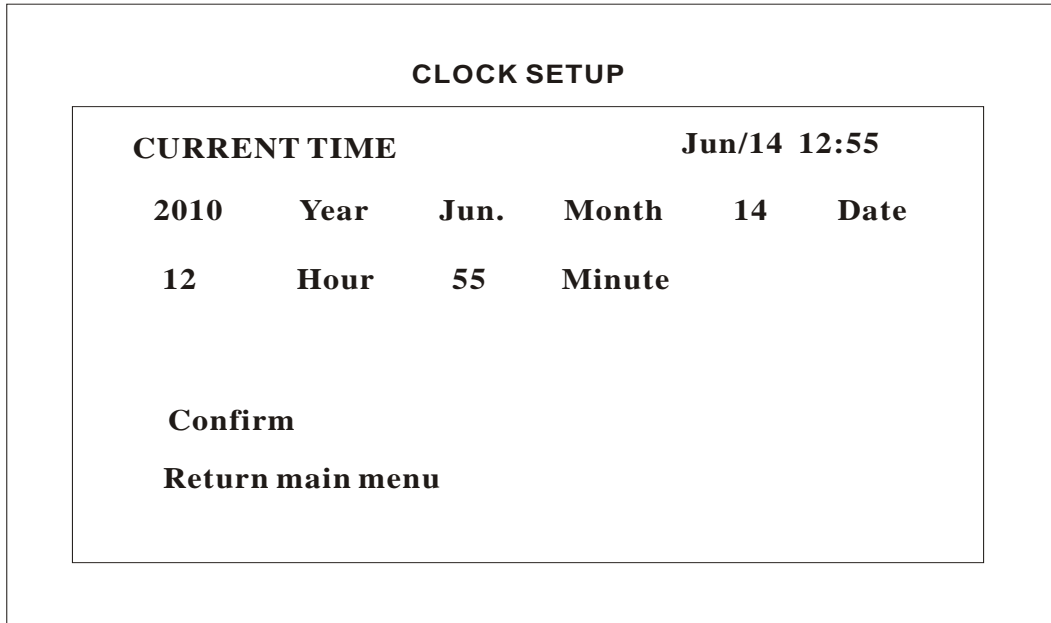
> PC Setting: only applicable with VGA port

- Auto Adjust: adjusts automatically according to the input signal
- Horizontal Pos. / Vertical Pos.: adjusts the position of the image on the screen
- Clock: adjusts the clock
- Phase: adjusts the phase



Clock Setup:

Press ←→ button to select item and press ↑↓ setup parameter.



ON/OFF Time Setup:

It can be set to two modes: Uniform Mode, Week Mode

Uniform Mode: Set it for the whole week, for example, turn it ON at 8 am, and turn it OFF at 10 pm.

Factory default is ON. Press ←→ button to set up ON/OFF mode and press play to confirm selection.

ON/OFF Time Setup			
ON/OFF Mode		Uniform Mode	
Everyday			
ON/OFF Mode		Normally ON	
	Active	ON Time	OFF Time
Range1	OFF	0: 00	0: 00
Range 2	OFF	0: 00	0: 00
Range 3	OFF	0: 00	0: 00
Return Main Menu			

Week Mode: Set it for every day within one week, for example, set it ON/OFF mode from Mon. to Fri., and set it to always OFF at weekend.

There are three ON/OFF mode: Normally ON, Always OFF, ON/OFF setup

Normally ON: the player keeps turned ON once power is connected.

Always OFF: the player will turn OFF after two minutes if there is no operation.

ON/OFF Time Setup: 3 groups of ON/OFF setup provided in the menu.

Press ←→ button to set up ON/OFF mode and press “PLAY” to confirm selection.

Note: factory default is Normally ON.

ON/OFF Time Setup			
ON/OFF Mode		Week mode	
Friday			
ON/OFF Mode		ON/OFF setup	
	Active	ON Time	OFF Time
Range1	OFF	0: 00	0: 00
Range 2	OFF	0: 00	0: 00
Range 3	OFF	0: 00	0: 00
Return Main Menu			

Volume Setup:

Press "VOLUME +" or "VOLUME -" to adjust volume or press ←→ button to select.

VOLUME SETUP	
DEFAULT VOLUME	30
Range1	OFF
Range 2	OFF
Range 3	OFF
Confirm	
Return Main Menu	

Press "PLAY" to set up volume of each range, press ↑↓ to select the right item. Choose Return to exit. See below drawing.

VOLUME SETUP		
DEFAULT VOLUME		
	active	OFF
Range1	Start Hour	00
Range 2	Start min	00
Range 3	End Hour	00
	End min	00
	Volume	0
Confirm		
Return Main Menu		

2. System Operation

2.1 System Functions

1. Auto Copy Function: import the media file from flash disk to memory card automatically.
2. Auto Play System: users can set times to switch input signal from different ports and internal storage.
3. Timer ON/OFF function.
4. Seamless Play: no black screen when program switching by following the below requirements:
 - 1) All of the media files should be the same format, for example it can support suffix .TS/.MPG video file.
 - 2) The resolution, codec, code rate, frame rate should be the same for all video files, and the audio coder, sample rate should be the same for all audio files.

Note: If playing high definition (HD) combine with standard definition (SD) video file, it should:

- 1) Use video converter (like Ulead Video Studio) to convert the SD and HD video files to be one HD video program.
- 2) Use video converter (like Ulead Video Studio) to convert the resolution, codec and frame rate of SD file to be the same as the HD video file.

2.2 Supported Media Files

Regular play		
Video Codec		Container
MPEG1, 2		MPG, MPEG
MPEG2, H.264		MPEG2 –TS H264-TS
MPEG2		MPEG2 –PS
MPEG4 Xvid 1.00 Xvid 1.01, Xvid 1.02, Xvid 1.03, Xvid 1.10-beta1/2 H.264		AVI, MP4
H.264, MPEG1, 2, 4		MKV
Seamless play		
Video Codec		Container
Mpeg1, 2		MPG, MPEG
MPEG2, H.264		MPEG2 –TS H264-TS
	Supported coded format	Supported suffix
Audio	WMA, MP3, M4A(AAC)	.wma/.mp3/.m4a

1. Supported video files include: MPEG2, H.264 file. This unit does NOT support DIVX6.x, MSVC/CRAM, MP42, GMC, IV32, RLE, cvid, VC1, RV20 and WMV.
2. Supported audio files include: AC3, MP3, AAC, Cook. This unit does NOT support Sony ATRAC3, DTS, Dobby HD.
3. Supported image file format is JPEG. This unit does NOT support Progressive JPEGs.
4. Support storage devices (memory card) in NTFS, FAT32 and FAT16. This unit does NOT support NTFS compressed file

Video and image files should be a maximum 1080x1920 resolution.

2.3 Steps to Load Media Files

1. Load the files you want to play on to USB drive in the root directory (without putting them into a folder).
2. Insert USB drive into the slot marked "USB (Mainboard)" on the back of the unit.
3. This will automatically delete any files currently stored on the unit's internal memory.
4. The files will then be copied to the internal memory and once completely loaded it will ask you to remove USB drive.
5. Remove the USB drive.
6. The unit will now play the stored files.

2.4 Inputs

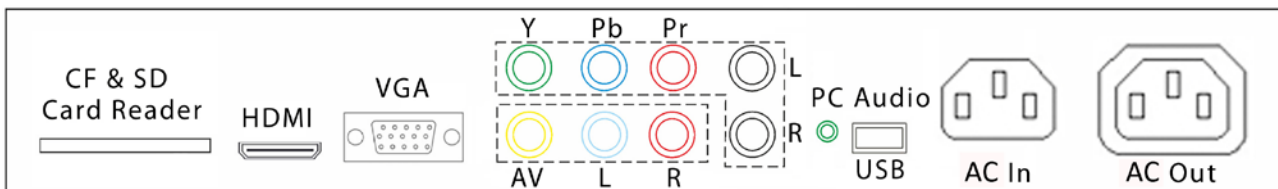
CF/SD – Compact Flash and Secure Digital Card Reader

HDMI – High Definition Multimedia Interface Signal Input

VGA – Video Graphics Array Signal Input

YPbPr – Component Signal Input

Video In – Composite Signal Input



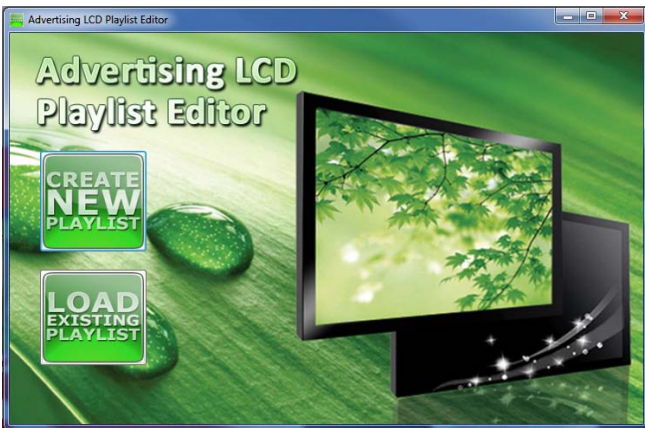
Note: The YPbPr and VGA connections cannot be used at the same time, and their audio connection cannot be connected at the same time.

3. Advanced Guide

Although this unit can operate without using any additional software, for more advanced applications please copy the scheduling software or Playlist Editor (on the CD provided) to your computers' hard drive. The software also allows you to edit existing

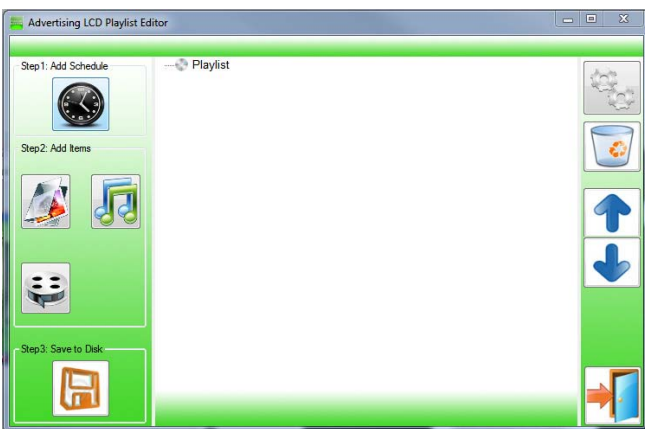
3.1 Main Menu

On opening the application you will be greeted by the main menu screen, giving you the options of "Create New Playlist" and "Load Existing Playlist".



3.2 Creating Playlists

Once you have selected "Create New Playlist" the playlist creator will be launched.



The Playlist Editor is laid out in a user friendly way with the primary functions on the left hand side in easy to follow steps.

3.2.1 Add Schedule

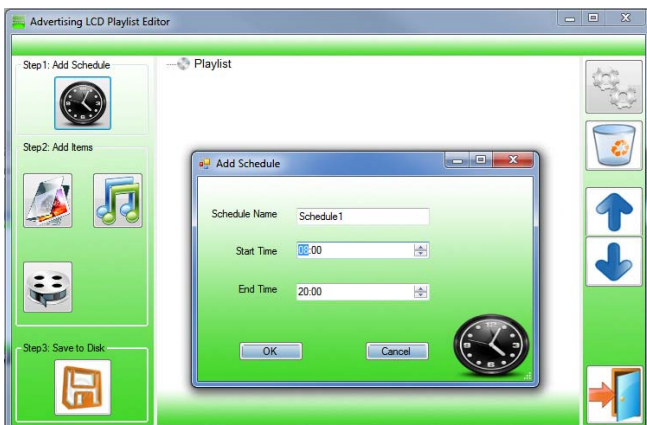
The schedule functions as a timer for the playlists, so you can have one or more playlists scheduled to start and end at different times of the day.

Note: If you enter more than one schedule ensure that the consecutive schedule times do not overlap.

Click on the “Add Schedule” Button

- > Type a Schedule name
- > Select preferred start time
- > Select preferred end time
- > Click “OK”
- > Schedule will appear in the playlist.

To add more schedules simply follow the whole process again for the preferred number of schedules, ensuring you select unique schedule names and times.



3.2.2 Add Selected Items

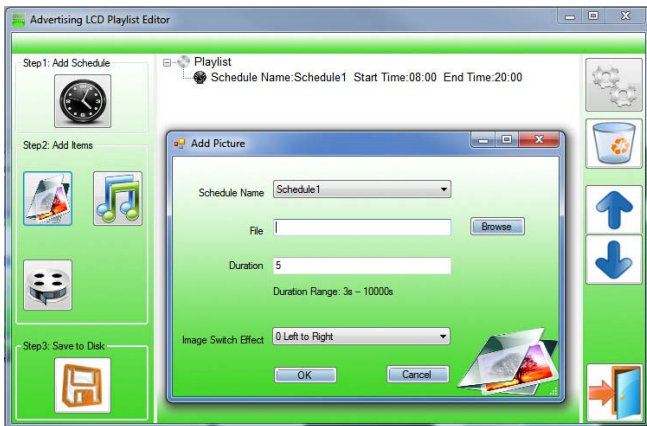
Note: For compatible file formats please refer to 2.2 Supported Media Files.

Adding Images

Click “Add Image”

- > Select appropriate Schedule
- > Click “Browse” and locate and select files
- > Enter a duration time
- > Select Image switch mode
- > Click “OK”
- > Image appears in Schedule.

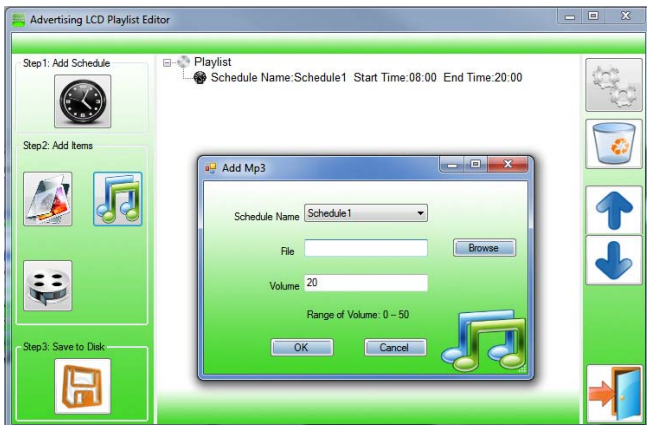
You can select multiple image files at once to add to a schedule, you can also move each item up or down in the playlist by using the arrow buttons on the right hand side.



Adding Audio

- Click "Add MP3"
- > Select Schedule
- > Click "Browse" and select MP3 file
- > Enter volume level
- > Click "OK"
- > MP3 Appears in Schedule.

Note: You must add audio files after all image files.

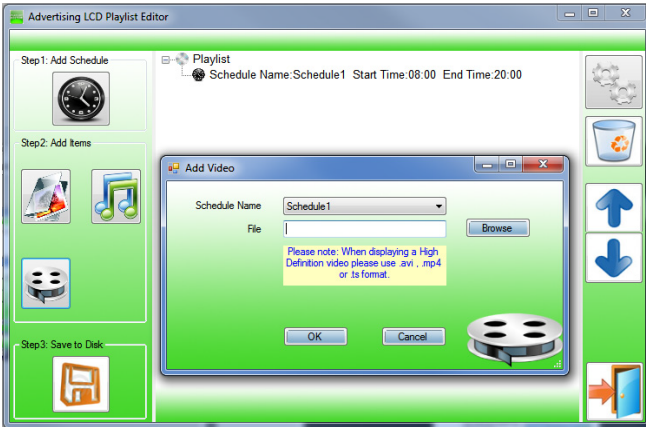


Adding Video

- Click "Add Video"
- > Select Schedule
- > Click "Browse" and locate Video file
- > Enter preferred repeat
- > Enter preferred volume

- > Click "OK"
- > Video appears in playlist.

Note: You cannot add Videos and MP3 audio files in the same schedule.

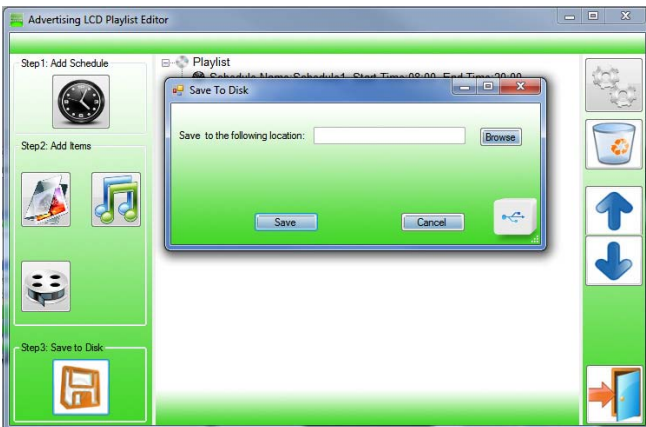


3.2.3 Saving

Note: Before saving please ensure location drive is empty.

Click "Save to Disk"

- > Click "Browse" and select the top level of the USB drive as the location of the playlist and files
- > Click "Save".



3.3 Editing Playlists

From the main menu click "Load Existing Playlist"

> Locate and select playlist to edit

> Playlist appears in playlist creator

> Select item to edit and click "Edit" button located on the top right hand side of the application.

Note: You can also add items to the playlist and add further schedules.

3.3.1 Deleting Items

To delete items within a playlist, select the item and click "Delete" - located on the right hand side of the application. The item will be removed from the playlist.

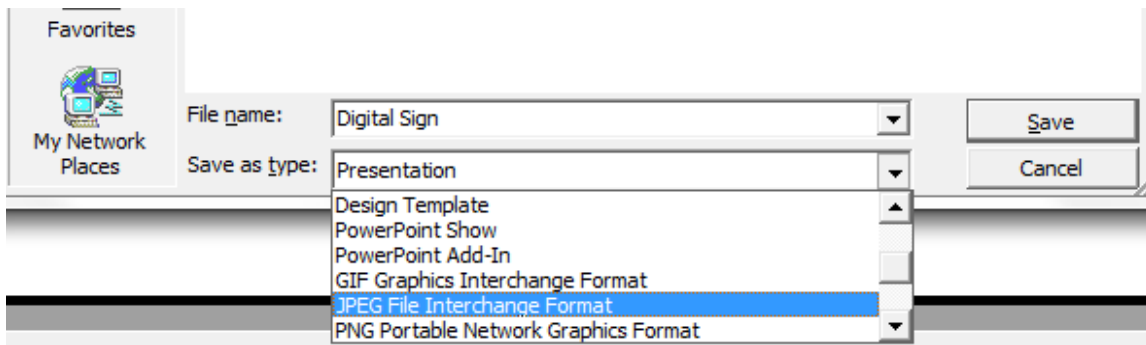
4. F.A.Qs and Troubleshooting Guide

4.1 How do I play PowerPoint presentations on my display?

4.1.1 Option 1 (for plain slides with no animation):

You can save the PowerPoint presentation as a JPEG File Interchange Format (.JPG). Microsoft PowerPoint software allows the user to do this

- 1) Create or open a PowerPoint presentation.
- 2) Click File > Save As
- 3) Enter a File name
- 4) Click on "Save as type" scroll down and find the file extension "JPEG file interchange format", as shown in the image below.



- 5) Click Save.
- 6) A message will appear asking if you would like to save all slides as JPEG's
- 7) Once you have selected your option, The JPEG images will be saved and are ready to use within a playlist or to upload to a storage device.

Note: For the best portrait resolution, you can use this PowerPoint Page Setup: Width 24cm; Height 42.6cm (9:16 Ratio)

4.1.2 Options 2 (for presentations with animation):

Note: When creating content intended for a video output the document must be set up in landscape format. All video files are landscape by convention so the unit will rotate these file 90° anti-clockwise to make them fit the screen. Before converting the video please ensure your content is orientated as such:



Your software CD has a “Sample” folder with examples of content if you are unsure of the correct page orientation.

You can convert the PowerPoint presentation to a MPEG video clip. For the best display quality you should use the MPEG2 format which gives the best display quality. We suggest that you use the following software:

Software Name: Wondershare PPT2DVD

Web link: <http://www.ppt-to-dvd.com/ppt2dvd/overview.html> :

Select Video Format: PowerPoint to MPEG2 Video Settings:

- TV Standard: NTSC (29.97fps);
- Standard: Standard DVD;
- Aspect Ratio: 16:9 (widescreen);
- Encode Size: Width 720, Height 480.

4.2 Wireless connection

The standard unit uses plug and play via USB stick. However, it is possible to introduce wireless connectivity for remote management of displays.

The units have space inside the casing for :

- Wireless Media Player (User supplied), or
- Small form factor PC (User supplied)

A user can introduce an external wireless media player or small PC after the unit has been purchased.

Within the unit case there are connections to the display panel as per section 2.4. A VGA or HDMI connection from the network media player or PC to the display is possible.

For locations that have no internet access an external User supplied 3G router may provide a possibility. Also the unit has a RJ45 connection on the outside of the case that can be connected to the external media player or PC. This allows for cabling to be used.

4.3 Video Conversion

There are two possible tools for converting video

4.3.1 Format Factory

This is a free multipurpose convertor that can be used for normal definition

Normal Definition

Note: When creating content intended for a video output the document must be set up in landscape format. All video files are landscape by convention so the unit will rotate these file 90° anti-clockwise to make them fit the screen. Before converting the video please ensure your content is orientated as such:



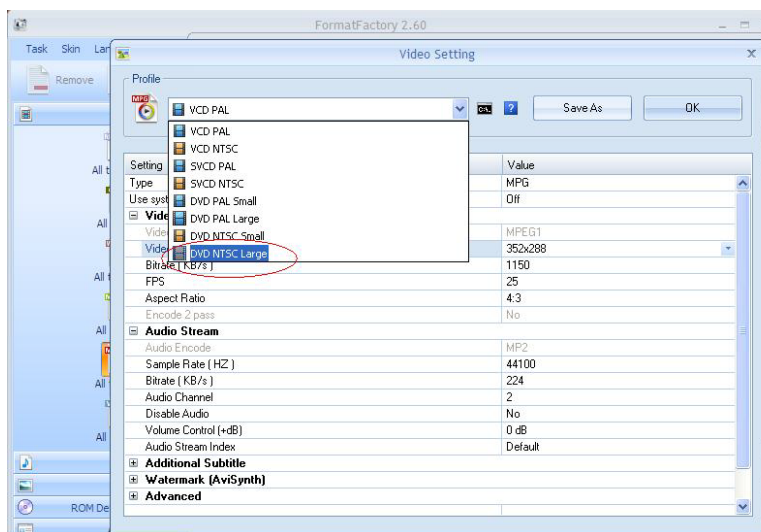
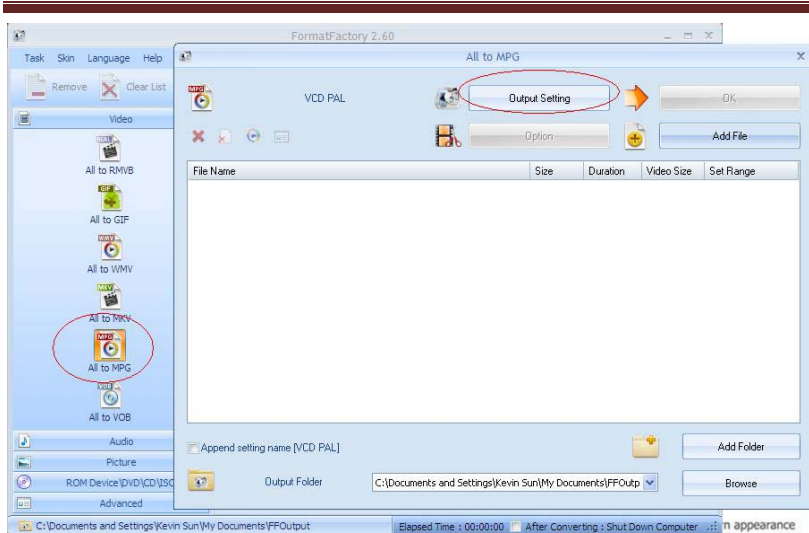
Your software CD has a “Sample” folder with examples of content if you are unsure of the correct page orientation.

1. Download a free convertor (Windows) called Format Factory which can be found at <http://www.formatoz.com/>
2. Start the Software (picture 1).

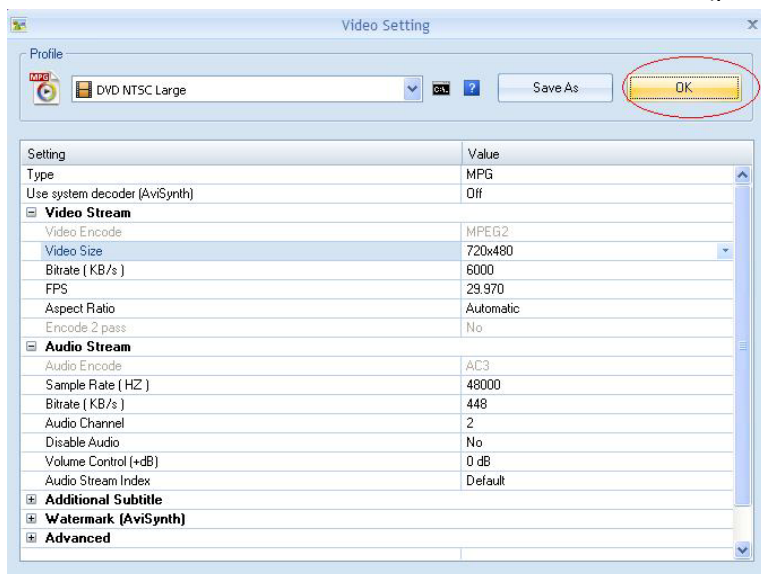


3. On the left hand window Scroll to ‘All to MPG’ (picture 1).
4. Select ‘All to MPG’ and a new window appears. Press ‘Output Setting’ button (picture 2) and a new screen appears (picture 3).

High Definition Freestanding Digital Poster User's Manual

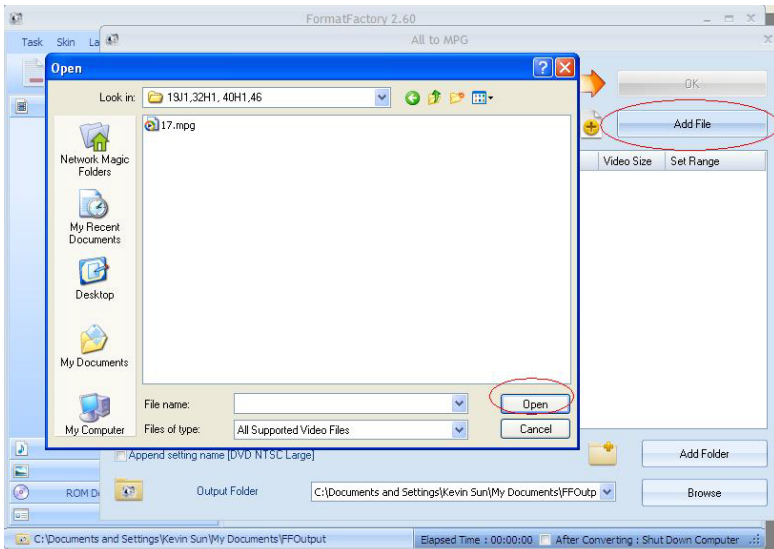


5. From the Video Setting drop down menu select 'DVD NTSC Large' (picture 3).
6. Check that the video size is 720x480 and Press 'OK' (picture 4).

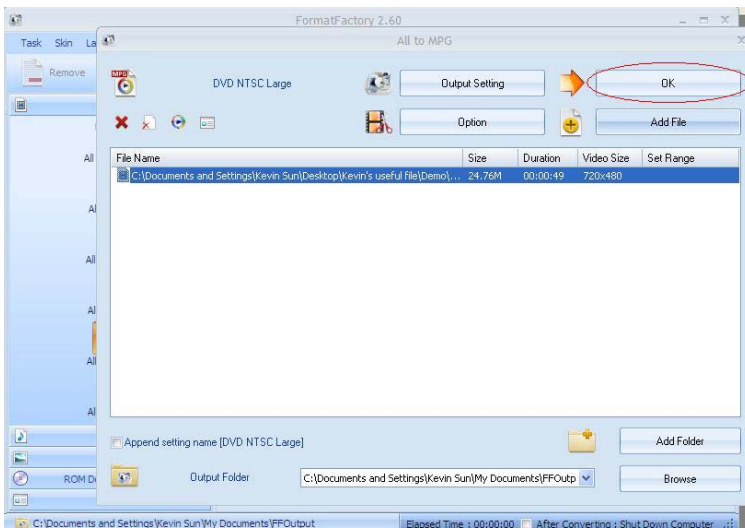


7. Press 'Add File' button and select the video that you want to convert (picture 5).

High Definition Freestanding Digital Poster User's Manual



8. Once you have selected your file Press the 'OK' button on the All to MPG window (picture 6).



9. Press 'Start' button on the main window (picture 7)



10. Once conversion is completed, Press 'Output Folder' on main window to find your converted video (picture 7).

4.3.2 HD Video Converter Deluxe

This is only really useful for High Definition videos.

Download link: <http://www.winxdvd.com/hd-video-converter-deluxe/>

This software does require to be bought.

Note: When creating content intended for a video output the document must be set up in landscape format. All video files are landscape by convention so the unit will rotate these file 90° anti-clockwise to make them fit the screen. Before converting the video please ensure your content is orientated as such:



Your software CD has a "Sample" folder with examples of content if you are unsure of the correct page orientation.

MP4 gives the best display quality. Please follow the following steps:

1. Select "to HD MP4" tab.
2. Change audio quality to 448 kbps, and change video quality to 12000, output image setting to custom size with custom aspect ratio, and video resolution to HD1080P(1920:1080), video codec to MPEG4.

See the screen shot below for the recommend settings.



4.4 Connecting screen to PC

The simplest way is to use the VGA output from the PC or laptop and connect to the VGA input (section 2.4) on the Display panel.

The display panel also has a HDMI and some PCs have HDMI output. In this case connect the PC HDMI to the input HDMI on the Display panel.

4.5 My Remote Control does not appear to be working

The remote controls have been design to have a limited range as some applications require several screens close together and individual control of each. If you are experiencing difficulties in operating your remote please follow these steps before calling your supplier.

- 1) Try pressing "SETUP" with the remote a few inches away from the unit near the bottom right hand corner of the display (see section 1.2). If this does not bring up the menu screen then go on to step 2.
- 2) Replace the batteries in you Remote Control (see section 1.4). If this does not solve the problem then please contact your supplier.

4.6 My media file does not fit properly on the screen

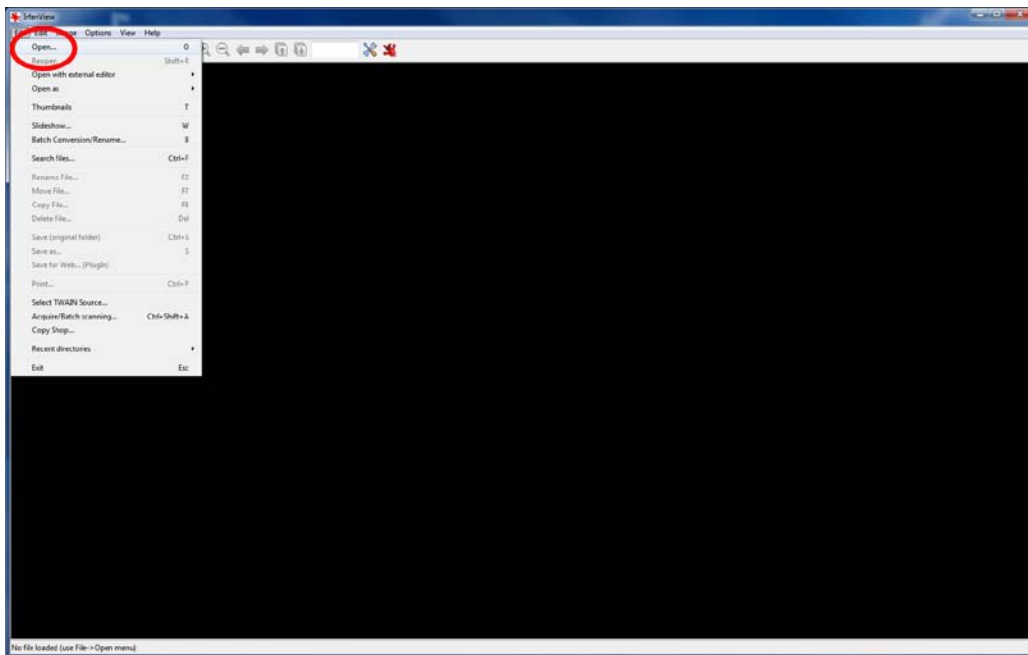
If your media is being displayed with black edges please refer to section 2.2. This has happened because the file is not 16:9 aspect ratio (1920x1080). Please resize file to 1920x1080 pixels and try loading the media onto the display once again.

4.7 My media file will not display

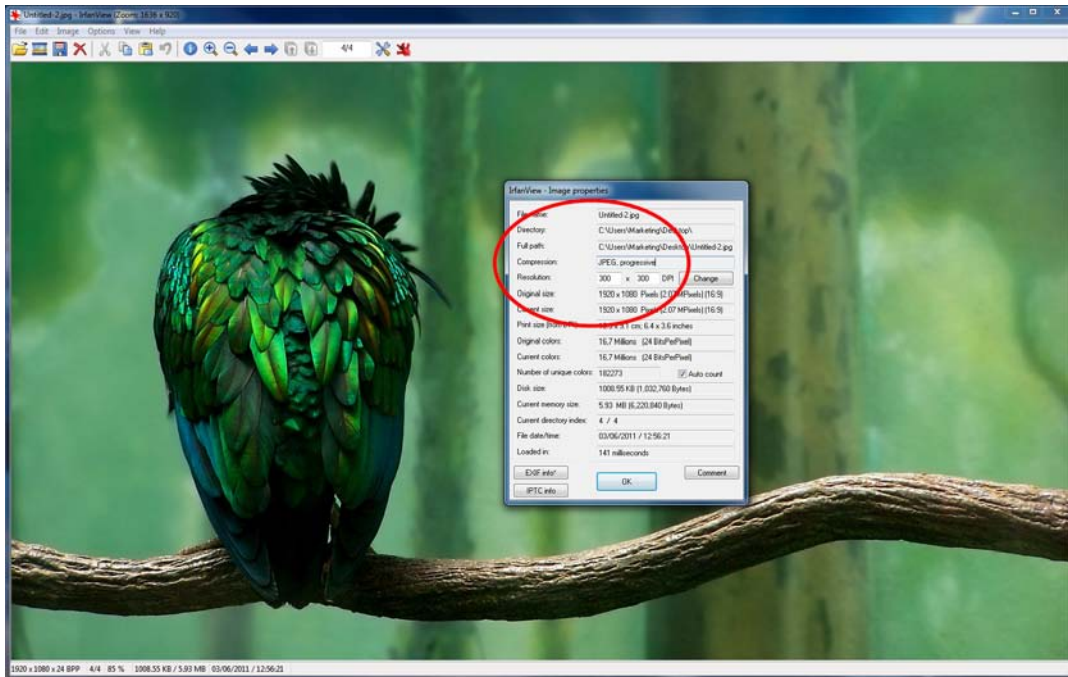
In this situation the first step to take to find the root of the problem is to start with a blank USB drive.

Copy 1 image onto the blank USB drive and insert this into the unit. If this will not play please check first that the media file is the correct size to fit the screen – 1920x1080 pixels. If it is any bigger than this there is a danger of the media file not displaying. For images, check that it is around 1MB in size and that it is a baseline JPEG not a progressive one. This can be checked by using free software called IrfanView.

- 1) Download Irfanview from http://download.cnet.com/IrfanView/3000-2192_4-10021962.html?part=dl-IrfanView&subj=dl&tag=button
- 2) Launch the software then open image file within the program.



- 3) In the toolbar click on “Image” > “Information”.
- 4) This brings up the “Image property options”.



- 5) Check the compression of the image, if it says “JPEG” the image is a baseline JPEG, however if it says “JPEG, progressive” then you must convert the image using software such as Adobe Photoshop.

4.8 My media files will not update

If you are have problems updating your display follow these steps to ensure it is not a technical issue.

- 1) Ensure that there are no other files or folders stored on the USB drive.
- 2) Check the USB drive for any additional self installation software, if it has this format the drive.
- 3) Make sure the USB drive is inserted into “USB (Mainboard)”.
- 4) Before contacting your supplier try another USB drive to be certain this is not the fault.

4.9 My media will not loop

If you are having issues with your content not playing over from the start once it has come to an end, then you will have to do a system reset.

- 1) To do this press “SETUP” on your remote control.
- 2) Go to “SYSTEM” and press “PLAY”.
- 3) Go to “Restore Default” and press “PLAY”.
- 4) This will clear the unit’s memory but not the time and date details, try your media again before contacting your supplier.

5. Full Range Specifications

LCD Freestanding Digital Poster						
Display Size	40 Inch with Integrated Literature Stand	46 Inch	55 Inch	65 Inch	70 Inch	82 Inch
Resolution	1080x1920	1080x1920	1080x1920	1080x1920	1080x1920	1080x1920
Display Area (mm)	495x883	562.54x1008.35	680x1210	806.6x1434	875x1554	1010x1800
Aspect Ratio	16:9	16:9	16:9	16:9	16:9	16:9
Unit Size (WxHxD mm)	800x2000x104	705x1700x128	802x1950x128	970x2000x136	1040x2100x141	1202x2350x150
Package Size (WxHxD mm)	950x2200x750	900x1880x650	1050x2200x700	1200x2300x750	1300x2400x800	1400x2500x900
Net Weight (kg)	70	100	120	170	190	230
Gross Weight (kg)	80	110	135	195	230	280
Brightness (cd/ m ²)	500	500	500	500	600	600
Colour	16.7	16.7	16.7	16.7	16.7	16.7
Viewing Angle	178°	178°	178°	178°	178°	178°
Contrast Ratio	2000:1	4000:1	4000:1	1500:1	1500:1	2000:1
Power Consumption (W)	195	370	450	800	950	1500
Input Voltage	AC110~240V(50Hz~60Hz)	AC110~240V(50Hz~60Hz)	AC110~240V(50Hz~60Hz)	AC110~240V(50Hz~60Hz)	AC110~240V(50Hz~60Hz)	AC110~240V(50Hz~60Hz)
Working Temperature	0 °C to 50 °C	0 °C to 50 °C	0 °C to 50 °C	0 °C to 50 °C	0 °C to 50 °C	0 °C to 50 °C
Media Formats	VIDEO (MPEG, AVI, Divx, Xvid, VOB), AUDIO (MP3, WMA), JPEG	VIDEO (MPEG, AVI, Divx, Xvid, VOB), AUDIO (MP3, WMA), JPEG	VIDEO (MPEG, AVI, Divx, Xvid, VOB), AUDIO (MP3, WMA), JPEG	VIDEO (MPEG, AVI, Divx, Xvid, VOB), AUDIO (MP3, WMA), JPEG	VIDEO (MPEG, AVI, Divx, Xvid, VOB), AUDIO (MP3, WMA), JPEG	VIDEO (MPEG, AVI, Divx, Xvid, VOB), AUDIO (MP3, WMA), JPEG
Video Signal Inputs	VGA, AV, HDMI, YPbPr, Video IN	VGA, AV, HDMI, YPbPr, Video IN	VGA, AV, HDMI, YPbPr, Video IN	VGA, AV, HDMI, YPbPr, Video IN	VGA, AV, HDMI, YPbPr, Video IN	VGA, AV, HDMI, YPbPr, Video IN
Audio	5W, 8Ω	5W, 8Ω	5W, 8Ω	5W, 8Ω	5W, 8Ω	5W, 8Ω
Memory	2GB	2GB	2GB	2GB	2GB	2GB
Port	USB	USB	USB	USB	USB	USB
Accessories	Remote control, AC Power Cable, Scheduling Software CD, Key, User Manual	Remote control, AC Power Cable, Scheduling Software CD, Key, User Manual	Remote control, AC Power Cable, Scheduling Software CD, Key, User Manual	Remote control, AC Power Cable, Scheduling Software CD, Key, User Manual	Remote control, AC Power Cable, Scheduling Software CD, Key, User Manual	Remote control, AC Power Cable, Scheduling Software CD, Key, User Manual
Optional Extras	Touch Screen, Wheels, Networking, Double Sided Display, Custom Colours/Branding	Touch Screen, Wheels, Networking, Double Sided Display, Custom Colours/Branding	Touch Screen, Wheels, Networking, Double Sided Display, Custom Colours/Branding	Touch Screen, Wheels, Networking, Double Sided Display, Custom Colours/Branding	Touch Screen, Wheels, Networking, Double Sided Display, Custom Colours/Branding	Touch Screen, Wheels, Networking, Double Sided Display, Custom Colours/Branding