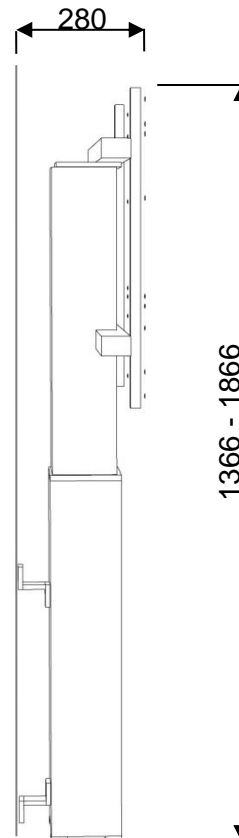
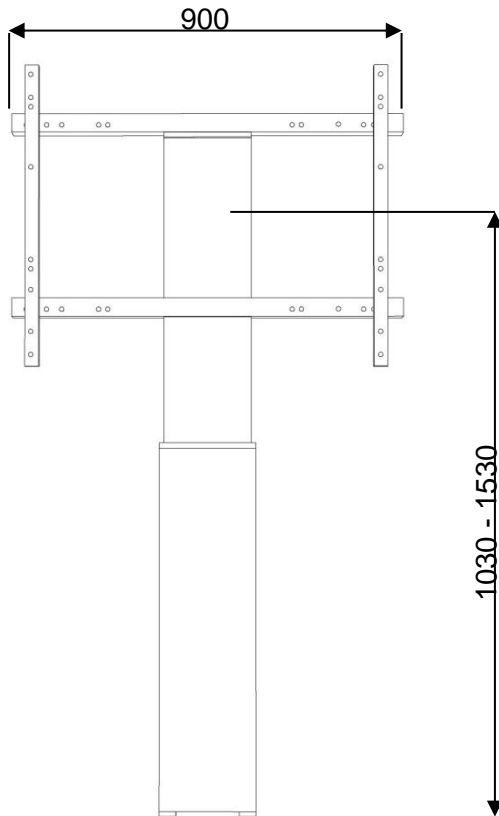
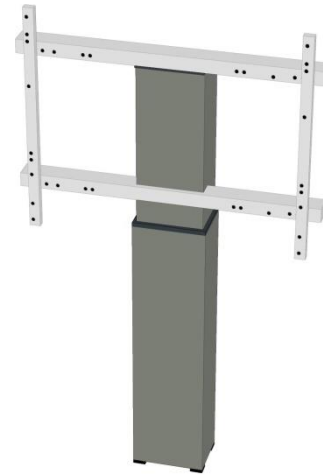


CONEN[®]
mounts



Short product description	Electrical height adjustable wall mounted system LIGHT
Item no.	CCELW-AF
Product features	- electrical height adjustable column LIGHT - 500mm stroke - four floor leveling feet - frame for use with 42" - 84" displays LIGHT - standard wall distance 11cm
Units	mm
Maximum load	> 150kg
Net system weight	approximately 23kg

Packing unit	CCELW-AF
Short description of packing unit	Motorized center column and universal frame for displays LIGHT, L=120mm
Packing dimensions: height x width x depth (mm)	1320 x 270 x 220
Gross weight (kilograms)	27,8
Net weight (kilograms)	23,2