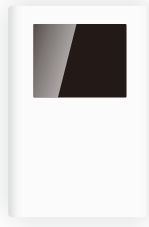


AC512-02 AC Trigger Manual V1.0.1



AC512-02 AC Trigger



Receiver

I . Features

1. High sensitivity;
2. Remembering the loading current automatically, personalized design more convenient to operate;
3. Over-current protection function with built in protector tube, more safety;
4. Strong anti-interference ability and signal transmission ability;
5. SMT craft, moisture-proof handle.

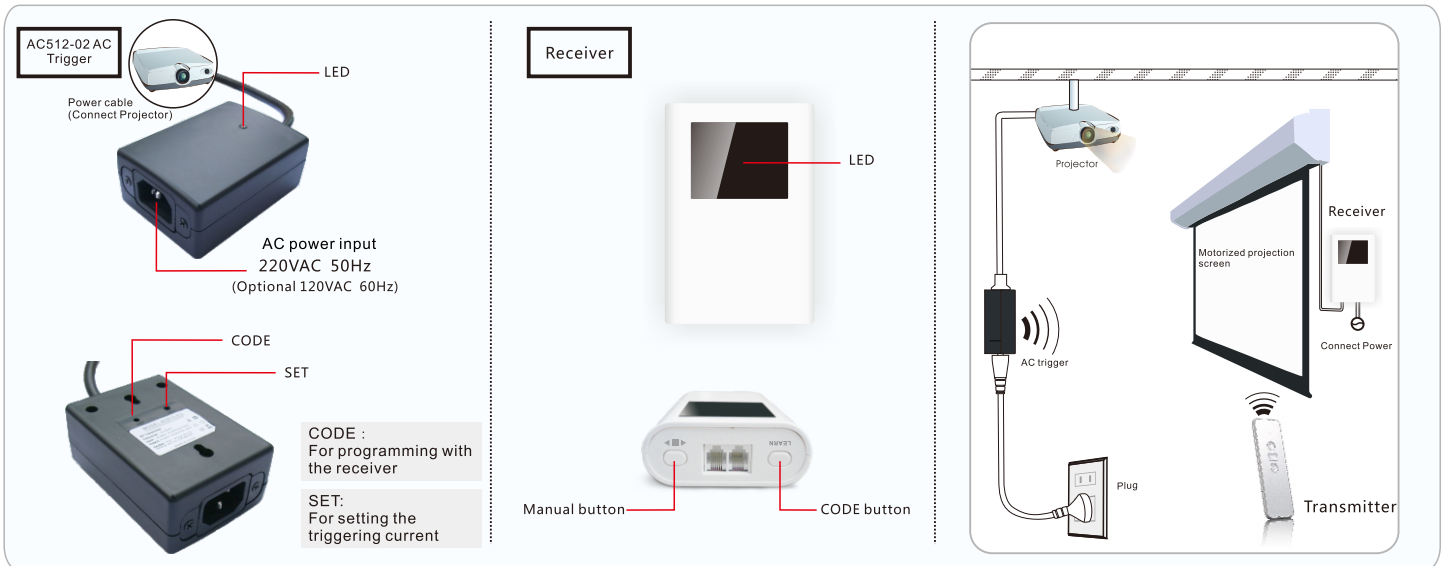
II . Parameters

Model No.	Rated Voltage	Standby Power	Working Temp	Frequency	Transmit Power	Loading Power
AC512-02	220VAC 50Hz (Optional 120VAC 60Hz)	≤ 1W	-20°C~55°C	433.92MHz	≤ 10mW	≤ 1000W

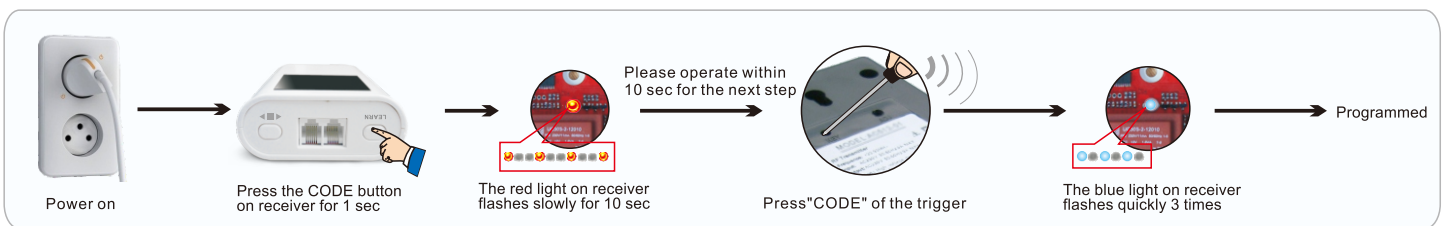
⚠ Attention *Please obey below rules on the basic of effective electricity allowance*



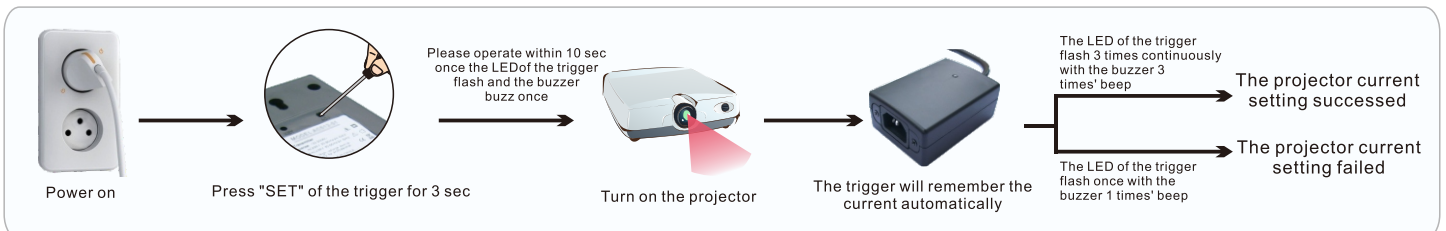
III. Connection and instruction



IV. CODEram



V. Current setting



Note: Turn on the projector, the projection screen goes down automatically, turn off the projector, the projection screen goes up automatically.